



EMERSON[™]
Industrial Automation

**Controls and Motors for
Large Moveable Structures**



AC Flux Vector Drives

STANDARD FEATURES

- Fully Digital Isolated Regulator
- Intelligent Thermal Management technology extends motor life
- SM-Keypad Plus is a back lit LCD display supporting five languages and “hot pluggable”
- SmartCard for simple setup and Cloning
- Multiple Fieldbus Capability (up to four) — ModbusRTU, optional Profibus-DP, Ethernet, DeviceNet, CAN, CANOpen, Interbus-S, & CTNet
- Line Protection
- Input Surge protection
- Output short circuit protection
- Phase Loss/Undervoltage protection
- Main disconnect
- Transient Protection
- Overload Protection
- Proof-of-torque control



- Locking Mode torque control (release and resetting modes)
- Rugged NEMA 12 12GA. Ventilated Enclosure
- Electronic Braking or Line Regenerative
- Line regenerative is true four quadrant control
- 32-bit microprocessor design with 16-bit, 250 µsec high resolution analog inputs
- VFD is full load tested with factory certified test data

Inverter Control Replacement of Wound Rotor Motor Systems

STANDARD FEATURES

- Stepless Speed Control
- Compact design
- All adjustments by keypad entry
- Comm. port - RS-485 Modbus RTU
- Transient protected (MOV)
- Intelligent Thermal Management technology extends motor life
- English word Messages, Faults, Status, & Parameters
- Output Fault Protected
- Total 3-phase control
- Rugged NEMA 12 Ventilated Enclosure with free-standing models
- Speed matching & loadsharing (opt.)
- All major fieldbus protocols supported (opt.)

OPTIONAL FEATURES

- Speed matching and loadsharing
- Support for all major fieldbuses
- 120 or 240 VAC I/O
- Motor Protection Filters



DC Motors

- In accordance with NEMA MG-1
- Re-greasable ball bearings
- Moisture Resistant Insulation
- Optional Extended Shaft to match mechanicals
- Drain Plugs
- N/C thermostat
- Frame finished with Corrosion-resistant paint or coating
- Certified Motor test reports to be provided when required



AC Flux Vector Motors

- In accordance with NEMA MG-1
- Motors to be specifically designed for Vector Duty 1000:1 speed range
- Re-greasable ball bearings
- Moisture Resistant Insulation
- Optional Extended Shaft to match mechanicals
- Drain Plugs
- N/C thermostat
- Frame finished with Corrosion-resistant paint or coating
- Certified Motor test reports to be provided when required
- Motor encoder to be compatible with Flux Vector
- Motor designed to operate up to a 20kHz carrier frequency



You can count on Fincor

Count on Fincor to provide assistance, consultation and a wide selection of AC and DC motor controllers for Large Moveable Structure applications.

When you need specialized technical assistance, you can count on the total capabilities of sales specialists, factory design and application engineers and comprehensive training services.

Fincor products are designed and built to provide a high level of dependable service to this industry. And we provide that same high level of service in working with our customers.

Anytime, anywhere you are never more than a phone call away.

You can count on it.



EMERSON. Consider it Solved.

Leading the Industry at every turn

Serving worldwide industry for almost half a century, Fincor has achieved renowned status as a world class supplier of AC and DC drives, as well as electrical motion controls.

Fincor is widely recognized in industries as diverse as newspaper printing, ski lifts, commercial refrigeration, pumping and heavy moveable structures. All of our specialized products and services including technical support are available 24 hours a day, 7 days a week everyday of the year. Our experience spans the broadest of industries -- Our drives are engineered with maximum flexibility so they can fit into any niche you choose.

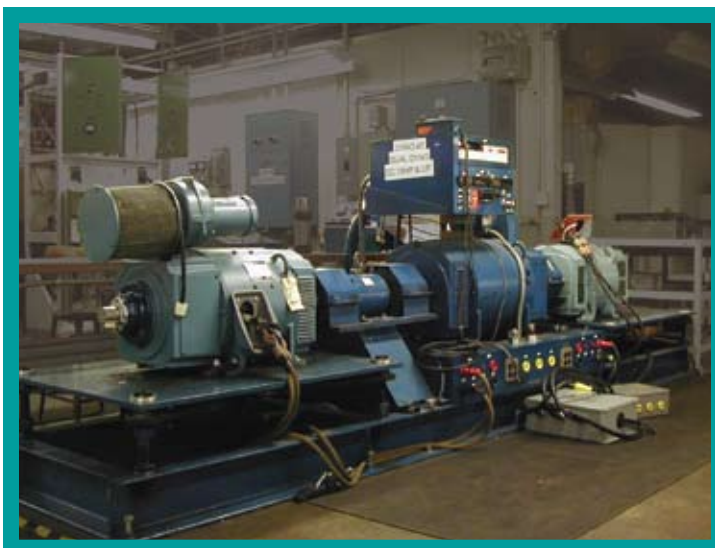
With Fincor you get the best of both worlds. Our application engineers average over 38 years experience in helping you solve application problems.



If you prefer to buy all your motion control components from one source -- look no further. Our wide assortment of AC and DC variable speed drives, motors, transformers and accessories coupled with our rich history and experience in application solutions - show why Fincor continues leading the industry at every turn.



Factory Performance Certification



- Complete Factory-certified dynamometer testing with every job
- Full-load capabilities through 400HP (including Speed matching and load sharing)
- Documented test results supplied with each job
- Complete test instrumentation controls
- Witness Test capabilities & scheduling

Leading the
Industry
at every turn



Fincor **Service**

Every hour - every day - experienced Fincor technicians are available to provide technical information or rush replacement parts to our customers.

The technicians are backed-up in the field by a worldwide network of Fincor trained service representatives. Our service policy is dedicated to competence and speed, tailored to industries where production schedules are full and "down-time" faults must be identified and corrected quickly.

- Around the clock service
- Worldwide service
- Factory trained service representatives
- Startup assistance
- Maintenance contracts
- Customer training seminars

Fincor Automation, Inc.
3750 East Market Street
York, PA 17402
717-751-4200
FAX: 717-751-4263
e-mail: fincordrives@emersonct.com
website: www.fincor.net



© Control Techniques 2007. The information contained in this brochure is for guidance only and does not form part of any contract. The accuracy cannot be guaranteed as Control Techniques have an ongoing process of development and reserve the right to change the specification of their products without notice.

