

Operator Interfaces

CTVue – Graphical HMI

The powerful CTVue HMI line and integrated drivers for Control Technique drives make it easy to integrate HMI with CT drives. The broad offering of CTVue HMI's are easy to program with the free and easy to use CTVue configurator software. The broad hardware offering also ensures there is a CTVue HMI that balances your price and functionality needs.

For small displays, the economical 303L and 303M provide a 3" monochrome graphical LCD display. The 303L is the low cost choice with only one RS485 port. The 303M is full featured with one Ethernet, two RS232, one RS485 and one Compact Flash port.

The Compact Flash port allows for storage and transfer of data from a variety of external data sources using a standard compact flash card (not included).

For medium displays, the 306M/A 6" and 308A 8", graphical touch screens provide larger screens for better display of graphics. 306 and 308 versions include Ethernet, one RS485, two RS232, and one compact flash port. The TFT active matrix "A" version provides the brightest, clearest, widest viewable display while the TFT "C" versions provide color touch graphics. The LCD "M" version is a low cost monochrome graphical display.

For large displays, the 310C and 315C graphical color touch screens provide the most graphical display area while offering all the connectivity and features of the 306 and 308 series. A super bright NEMA 4X outdoor version of the 310S is available upon request.

- **Integrated Control Techniques Drivers**
- **Remote Web and FTP access**
- **Powerful Protocol Converter**
- **USB Programming Port**
- **Alarming and Data Logging**
- **Bright TFT Color Display Offerings**
- **Free Programming Software**
- **Simple To Use Software**
- **Flexible Compact Flash Slot**
- **Security User Levels/Passwords**
- **Available Front Foil Customization**
- **Large 4 Mb/8 Mb Onboard Flash Memory**
- **For Use in Hazardous Locations**



CTVue

Easily create your customized machine interface with the free CTVue configurator software.

CTVUE-303L/M/S



- 3", 128 x 64, LCD Display
- Ethernet (M), RS485, and RS232 (L) port, Outdoor version available (S)
- 8 x Customizable Function Keys
- Compact Flash Slot
- 4 Mb Non-Volatile FLASH memory

CTVUE-306M/A



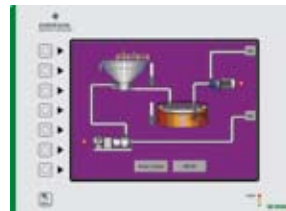
- 5.7" Graphic Touch Display
- TFT (A) - 320 x 240, 256 color
- LCD (M) 320 x 240, Monochrome
- Ethernet Port, RS485 and RS232
- Compact flash Slot, 4/8 Mb onboard Flash

CTVUE-308A



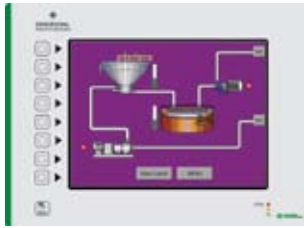
- 8.4" Graphic Touch TFT
- Ethernet, RS485, RS232
- Compact Flash Slot, 8 Mb onboard Flash

CTVUE-310C



- 10.4" Graphic Color Touch
- 640 x 480, TFT 256 colors
- Compact Flash Slot, 8 Mb onboard Flash
- Outdoor Version Available Upon Request

CTVUE-315C



- 15" Graphic Color Touch
- 1024 x 768, TFT 32K colors
- Ethernet Port, (2) RS485, (2) RS232
- Compact Flash Slot, 32 Mb onboard Flash

CTVUE ORDERING CODES

Order Code	Description	Width in mm	Height in mm	Depth in mm
CTVUE-303L	3" 128 x 64 LCD , 1 x RS485	7.45 190	5.85 150	2.1 52
CTVUE-303M	3" 128 x 64 LCD, Ethernet, RS485, RS232, compact flash	7.45 190	5.85 150	2.1 52
CTVUE-303S	3" 128 x 64 LCD, Ethernet, RS485, RS232, compact flash with UV protection for outdoor use	7.45 190	5.85 150	2.1 52
CTVUE-306M	5.7" LCD Monochrome touch - Ethernet, RS485, RS232	8.83 224	7.08 178	2.3 58
CTVUE-306A	5.7" TFT 256 color touch - Ethernet, RS485, RS232	8.83 224	7.08 178	2.3 58
CTVUE-308A	8.4" TFT 256 color touch - Ethernet, RS485, RS232	10.32 261	8.18 208	2.2 66
CTVUE-310C, -310S* (*UV protection)	10.4" TFT 256 color touch - Ethernet, RS485, RS232	12.83 327	9.5 242	2.2 56
CTVUE-315C	15" TFT 32K color touch - Ethernet, RS485, RS232	16 404	13 330	2.8 71
CTVUE-CF512	512 MB Industrial CF Memory			
CTVUE-CF1000	1 GB Industrial CF Memory			
CTVUE-CONFIG-CD	Free Programming Software CD			
CTVUE-USB	Programming cable PC to CTVue			
CTVUE-EP-485-xxx*	Cable from CTVue to Epsilon EP, Unidrive SP or Commander SK			
CTVUE-MME-485-xxx*	Cable from CTVue to EN-series, Epsilon, and MDS			
CTVUE-DC-485-xxx*	Cable from CTVue to Mentor II or Quantum III			
CTVUE-MC-485-xxx*	Cable from CTVue to MC Series			
CTVUE-RS00	RS232 / RS485 Communications Option Card			
CTVUE-CN00	CANOpen Communications Option Card			
CTVUE-PBDP	Profibus-DP Communications Option Card			
CTVUE-DN00	DeviceNet Communications Option Card			

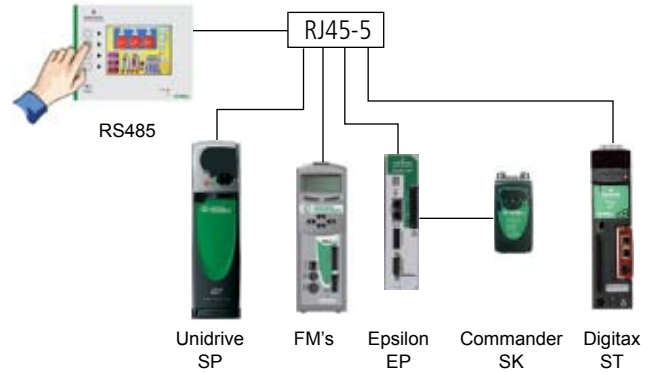
*Standard cable lengths are 5, 15, 25 ft (-005) (-015) (-025)

CTVUE CONNECTIVITY AND FUNCTIONALITY

The CTVue color touchscreens are easy to setup and connect to your application.

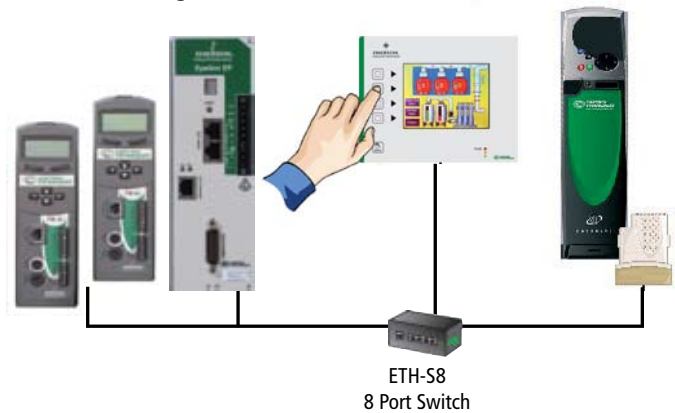
Connection to the serial port

The operator interface is connected directly to the RJ45 connection on the serial port. RS485 is a multi-drop protocol and so may be connected to multiple drives if required.



Connecting via Ethernet

The Epsilon EP-P, or FM-3/4E and SM-Ethernet Option modules allow the operator interface to be connected to the drive using Modbus TCP/IP.



CTVUE SPECIFICATIONS

- Power Input** 24 VDC
- Temperature** 0-50° Celsius
- Environmental** IP66 / NEMA 4X -
FOR USE IN HAZARDOUS LOCATIONS:
Class I, Division 2, Groups A, B, C, and D
Class II, Division 2, Groups F and G
Class III, Division 2
- Operating Humidity** 80% relative maximum from 0-50° Celsius

LED Keypads

The SM-Keypad, SP-Keypad and DST-Keypad are designed for use with Unidrive SP and Digitax ST. They have two rows of 7 segment LED displays. These keypads are very easy to read at a distance or in poor lighting conditions. The upper row shows the drive status or the current menu and parameter number. The lower row displays the parameter value or the specific trip type. These optional keypads are ordered separately from the drives.

SM-Keypad - Unidrive SP (size 1-6)

The SM-Keypad was designed for use with the Unidrive SP sizes 1-6.
Order Code: SM-KEYPAD



SP-Keypad - Unidrive SP (size 0)

The SP-Keypad was designed for use with the Unidrive SP size Zero.
Order Code: KEYPAD-SP0



Unidrive SP size Zero LED Keypad

DST-Keypad - Digitax ST

The DST-Keypad was designed for use with the Digitax-ST series servo drives.
Order Code: DST-KEYPAD



Digitax ST LED Keypad

LCD Keypads

SM-Keypad Plus, designed for use with Unidrive SP and Commander SK (remote only), has a multi-lingual backlit LCD display with three lines of text. Line 1 shows drive status or current menu and parameter number plus parameter value or the specific trip. Lines 2 and 3 show the parameter name or the help text.

SM-Keypad Plus



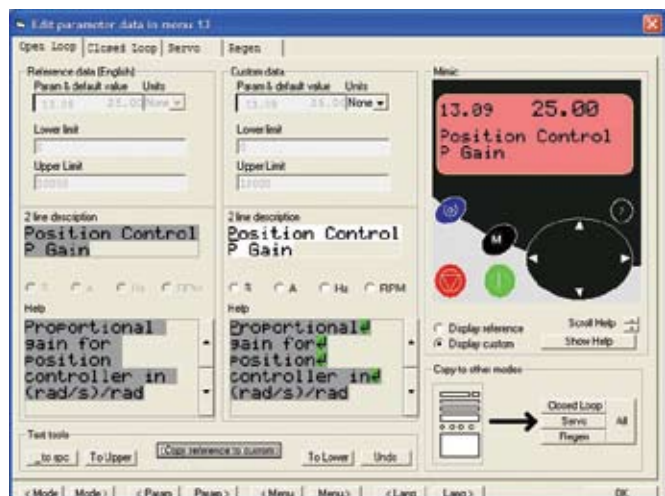
There are five text databases as standard: French, Italian, German, Spanish and English plus a custom database for application specific text. Help text is available at the press of a button. The parameter set that may be browsed can be filtered, to tailor a drive to a specific application or industry. With the standard communications cable and Windows™ text string tool from Control Techniques, you can customize the human-machine interface of SM-Keypad Plus to your own specific application, and make it your own.

CGP-Keypad

The CGP-Keypad is designed for use with the Commander GP20.
Order Code: CGP-KEYPAD-PLUS



Commander GP20 Keypad



Parameter text may be customized using a Windows™ tool, for applications or further languages.