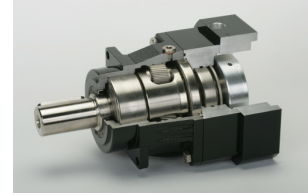


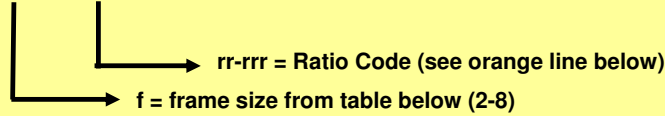
Standard Features:

- + Fastest Delivery: 5 Days standard ship schedule
- + Advanced Helical Gear Technology
- + 95 to 97% Efficiency
- + Quietest Running
- + Stober Drives provides 5 Year warranty
- + VA Discount Category



Order String:

CTP f rr-rrr / motor model number



ie: EB-202 drive & MGM205 motor with 3:1 ratio, order CTP321-003 / MGM-205

Gear Model Number	List Price
CTP221	\$1,063
CTP222	\$1,642
CTP321	\$1,110
CTP322	\$1,780
CTP421	\$1,565
CTP422	\$2,214
CTP521	\$2,159
CTP522	\$2,787
CTP721	\$3,066
CTP722	\$3,933
CTP821	\$4,114
CTP822	\$5,071

Keyed output shaft is standard with keyless or splined available.

Choose drive, motor, and gear ratio to determine frame size and ratio code.

		Frame Sizes for specific Drive & Motor Combinations											
Ratio Code >		21-003	21-004	21-005	21-007	21-010	22-015	22-020	22-025	22-035	22-050	22-070	22-100
Drive	Motor	3:1	4:1	5:1	7:1	10:1	15:1	20:1	25:1	35:1	50:1	70:1	100:1
EB-202	MG-205	3	2	2	2	2	2	2	2	3	3	3	4
EB-202	MG-208	3	2	2	2	2	2	2	3	3	3	3	4
EB-202	NT-207	3	2	2	2	2	2	3	3	3	3	4	4
EB-202	NT-212	3	2	2	2	2	2	3	3	3	4	4	5
EB-203	MG-205	3	2	2	2	2	2	2	2	3	3	3	4
EB-203	MG-208	3	2	2	2	2	2	3	3	4	4	4	5
EB-203	MG-316	3	2	2	2	3	3	4	4	5	5	5	5
EB-203	NT-212	3	2	2	2	2	2	3	3	3	4	4	5
EB-204	NT-207	3	2	2	2	2	2	3	3	3	3	4	4
EN-204	MG-205	3	2	2	2	2	2	2	2	3	3	3	4
EN-204	MG-208	3	2	2	2	2	2	3	3	3	4	4	5
EN-204	MG-316	3	2	2	2	3	3	4	4	5	5	5	7
EN-204	NT-207	3	2	2	2	2	2	3	3	3	3	4	4
EN-204	NT-212	3	2	2	2	2	2	3	3	3	4	4	5
EN-208	MG-316	3	2	2	2	3	3	4	4	5	5	5	7
EN-208	MG-455	3	3	3	4	4	5	5	7	7	7	8	8
EN-214	MG-4120	4	4	4	5	5	7	7	7	8	8		
EN-214	MG-455	3	3	3	4	4	5	5	7	7	7	8	8
EN-214	MG-490	3	4	4	4	5	5	7	7	7	8	8	8
MD-240	MH-8250	5	5	5	5	7	7	8	8				
MD-404	MH-316	3	2	2	2	3	3	4	4	4	5	5	5
MD-404	MH-340	3	3	3	3	4	4	5	5	5	7	7	7
MD-404	MH-455	3	3	3	3	4	5	5	5	5	7	7	8
MD-407	MH-455	3	3	3	3	4	5	5	5	5	7	7	8
MD-407	MH-490	3	3	3	3	4	5	5	5	5	7	7	8
MD-407	NT-320	3	2	2	3	3	3	4	4	4	5	5	5
MD-407	NT-330	3	3	3	3	3	4	5	5	5	5	7	7
MD-410	MH-455	3	3	3	3	4	5	5	5	5	7	7	8
MD-410	MH-490	3	3	3	3	4	5	5	5	5	7	7	8
MD-410	MH-6120	4	4	4	4	5	5	7	7	8	8	8	8
MD-410	NT-345	3	3	3	3	3	4	4	5	5	7	7	8
MD-410	NT-355	3	3	3	4	5	5	5	7	7	8	8	8
MD-420	MH-6120	4	4	4	4	5	5	7	7	8	8	8	8
MD-420	MH6200	4	4	4	4	5	5	7	7	8	8	8	8
MD-420	MH-6300	4	4	4	4	5	5	7	7	8	8	8	8
MD-434	MH-8500	5	5	7	7	8	8	8					
MD-434	MH-8750	8	8	8	8	8	8						
SP1401	75UMB300CACAA	3	2	2	2	3	3	3	3	4	4	5	5
SP1402	75UMD300CACAA	3	2	3	3	3	4	4	4	5	5	7	8
SP1402	95UMB300CACAA	3	3	3	3	3	4	4	4	5	5	7	7
SP1403	95UMB300CACAA	3	3	3	3	3	4	4	4	5	5	7	7
SP1404	95UMD300CACAA	3	3	3	4	4	5	5	5	7	7	8	8
SP1404	115UMB300CACAA	3	3	3	3	4	4	5	5	5	7	7	8
SP1406	142UMB300CACAA	3	4	3	4	4	5	7	5	7	7	8	8
SP2401	115UMD300CACAA	4	4	4	4	5	5	7	7	7	8	8	
SP2402	142UMD300CACAA	4	4	4	5	5	7	7	7	8	8		
SP2402	190UMA300CACAA	5	5	5	5	5	7	8	8	8			
SP2403	190UMA300CACAA	5	5	5	5	5	7	8	8	8			
SP3401	190UMB300CACAA	5	5	5	7	7	8	8					
SP3405	190UMC300CACAA	5	5	7	7	8	8						
SP3405	190UMD300CACAA	7	7	7	7	8							
SP4401	190UMD300CACAA	7	7	7	7	8							

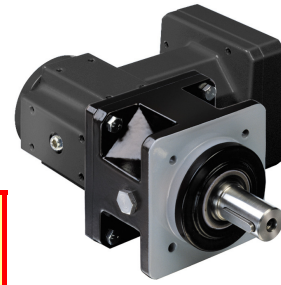
Other ratios available upon request

All sizing based on motor using nominal torque @ 2000 rpm from motor

Smaller planetary can be used based on application needs I.E..(inertia, bearing loads, current limited to motor)

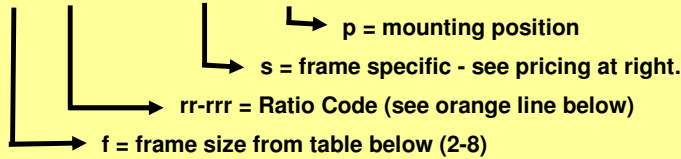
Standard Features:

- + Fastest Delivery: 5 Days standard ship schedule
- + Advanced Helical Gear Technology
- + 95 to 97% Efficiency
- + Quietest Running
- + Stober Drives provides 5 Year warranty
- + VA Discount Category



Order String:

CTP f rr-rrr-KXs-ELp / motor model number



ie: EB-202 drive & MGM205 motor with 3:1 ratio; order CTP321-003KX / MGM-205

Gear Model Number	List Price
CTP321-xxx-KX	\$2,557
CTP421-xxx-KX	\$2,857
CTP422-xxx-KX3	\$3,618
CTP521-xxx-KX5	\$3,129
CTP522-xxx-KX4	\$3,919
CTP721-xxx-KX7	\$3,626
CTP722-xxx-KX5	\$4,673
CTP821-xxx-KX8	\$5,658
CTP822-xxx-KX7	\$6,496

Keyed output shaft is standard with keyless or splined available.

Choose drive, motor, and gear ratio to determine frame size and ratio code.

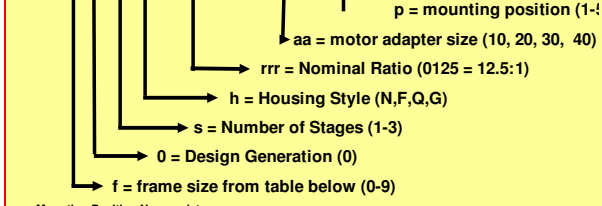
Ratio Code >		Frame Sizes for specific Drive & Motor Combinations											
		21-003	21-004	21-005	21-007	21-010	21-015	21-020	21-030	22-035	22-050	22-070	22-100
Drive	Motor	3:1	4:1	5:1	7:1	10:1	15:1	20:1	30:1	35:1	50:1	70:1	100:1
EB-202	MGM-205	3	3	3	3	3	3	3	3	3	3	3	4
EB-202	MGM-208	3	3	3	3	3	3	3	3	3	4	4	4
EB-202	NT-207	3	2	2	2	2	2	3	3	4	4	4	4
EB-202	NT-212	3	2	2	2	2	2	3	3	4	4	5	5
EB-203	MGM-205	3	3	3	3	3	3	3	3	3	3	3	4
EB-203	MGM-208	3	3	3	3	3	3	3	3	4	4	4	5
EB-203	MGM-316	3	3	3	3	3	3	3	4	4	5	5	5
EB-203	NT-212	3	2	2	2	2	2	3	3	4	4	5	5
EB-204	NT-207	3	2	2	2	2	2	3	3	4	4	4	4
EN-204	MGM-205	3	3	3	3	3	3	3	3	3	3	4	4
EN-204	MGM-208	3	3	3	3	3	3	3	3	4	4	4	5
EN-204	MGM-316	3	3	3	3	3	3	4	4	4	5	5	7
EN-204	NT-207	3	2	2	2	2	2	3	3	4	4	4	4
EN-204	NT-212	3	2	2	2	2	2	3	3	4	4	5	5
EN-208	MGM-316	3	3	3	3	3	3	4	4	4	5	5	7
EN-208	MGM-455	3	3	3	4	4	5	5	7	7	7	8	8
EN-214	MGM-4120	4	4	4	5	5	7	7	8	8	8		
EN-214	MGM-455	3	3	3	4	4	5	5	7	7	7	8	8
EN-214	MGM-490	4	5	5	5	5	5	7	8	8	8	8	
MD-240	MH-8250	5	5	5	5	7	7	7	8	8			
MD-404	MH-316	3	3	3	3	3	3	3	4	4	5	5	5
MD-404	MH-340	3	3	3	3	3	4	5	5	5	7	7	7
MD-404	MH-455	3	3	3	3	4	5	5	5	5	7	7	8
MD-407	MH-455	3	3	3	3	4	5	5	5	5	7	7	8
MD-407	MH-490	4	4	4	4	4	5	5	5	5	7	7	8
MD-407	NT-320	3	3	3	3	3	3	4	4	4	5	5	5
MD-407	NT-330	3	3	3	3	3	4	4	5	5	5	7	7
MD-410	MH-455	3	3	3	3	4	5	5	5	5	7	7	8
MD-410	MH-490	4	4	4	4	4	5	5	5	5	5	7	7
MD-410	MH-6120	4	4	4	4	5	5	7	7	7	8	8	
MD-410	NT-345	3	3	3	3	4	4	5	5	5	7	7	8
MD-410	NT-355	3	3	3	4	4	5	5	7	7	7	8	8
MD-420	MH-6120	4	4	4	4	5	5	7	7	7	8	8	
MD-420	MH6200	4	4	4	4	5	5	7	7	7	8	8	
MD-420	MH-6300	4	4	4	4	5	5	7	7	7	8	8	
MD-434	MH-8500	5	5	7	7	8	8						
MD-434	MH-8750	7	7	7	8	8							
SP1401	75UMB300CACAA	3	3	3	3	3	3	3	3	4	5	5	5
SP1402	75UMD300CACAA	3	3	3	3	3	4	4	5	5	5	7	8
SP1402	95UMB300CACAA	3	3	3	3	3	4	4	5	5	5	7	7
SP1403	95UMB300CACAA	3	3	3	3	3	4	4	5	5	5	7	7
SP1404	95UMD300CACAA	3	3	3	4	4	4	4	5	7	7	8	8
SP1404	115UMB300CACAA	3	3	3	3	4	4	5	5	5	7	7	8
SP1405	142UMB300CACAA	3	3	3	4	4	5	5	7	7	7	8	8
SP2401	115UMD300CACAA	4	4	4	4	5	5	7	7	7	8	8	
SP2402	142UMD300CACAA	4	4	4	5	5	7	7	8	8	8		
SP2402	190UMA300CACAA	5	5	5	5	5	7	7	8	8			
SP2403	190UMA300CACAA	5	5	5	5	5	7	7	8	8			
SP3401	190UMB300CACAA	5	5	5	7	7	8	8					
SP3405	190UMC300CACAA	5	5	5	7	8	8						
SP3405	190UMD300CACAA	7	7	7	7	8							
SP4401	190UMD300CACAA	7	7	7	7	8							

Other ratios available upon request

All sizing based on motor using nominal torque @ 2000 rpm from motor

Smaller planetary can be used based on application needs I.E..(inertia, bearing loads, current limited to motor)

Order String: CTC f 0 s h rrrr MTaa - Elp / motor model number



Mounting Position Nomenclature

Housing Styles

N - Foot Mounted F - Round Flange Q - Square Flange G - Tapped Holes

Motor Shaft

Size	Max. Dia.
MT10	19mm
MT20	24mm
MT30	28mm
MT40	48mm

Model Number	Output Shaft Size	List Price
CTC002 rrrr MT10	.75"	\$858
CTC002 rrrr MT20	.75"	\$994
CTC102 rrrr MT10	1"	\$889
CTC102 rrrr MT20	1"	\$1,025
CTC102 rrrr MT30	1"	\$1,203
CTC202 rrrr MT20	1.25"	\$1,256
CTC202 rrrr MT30	1.25"	\$1,433
CTC302 rrrr MT20	1.25"	\$1,449
CTC302 rrrr MT30	1.25"	\$1,627
CTC303 rrrr MT10	1.25"	\$1,331
CTC402 rrrr MT20	1.625"	\$1,675
CTC402 rrrr MT30	1.625"	\$1,853
CTC403 rrrr MT20	1.625"	\$1,833
CTC502 rrrr MT20	1.625"	\$2,215
CTC502 rrrr MT30	1.625"	\$2,393
CTC503 rrrr MT20	1.625"	\$2,429
CTC503 rrrr MT30	1.625"	\$2,607
CTC612 rrrr MT20	2.125"	\$2,622
CTC612 rrrr MT30	2.125"	\$2,799
CTC613 rrrr MT20	2.125"	\$2,707
CTC613 rrrr MT30	2.125"	\$2,885
CTC712 rrrr MT20	2.375"	\$3,278
CTC712 rrrr MT30	2.375"	\$3,456
CTC713 rrrr MT20	2.375"	\$3,639
CTC713 rrrr MT30	2.375"	\$3,816
CTC812 rrrr MT30	2.875"	\$4,933
CTC813 rrrr MT30	2.875"	\$5,754
CTC913 rrrr MT30	3.625"	\$8,358



- Standard Features:**
- + Fastest Delivery: 5 Days standard ship schedule
 - + Advanced Helical Gear Technology
 - + 95 to 97% Efficiency
 - + Quietest Running
 - + Stober Drives provides 5 Year warranty
- +VA Discount Category**

- = Housing Style per above
 rrr = approximate gear ratio
 Prices, Specifications and Availability are subject to change without notice.
 Standard black paint with keyed output shaft.

Choose drive, motor, and gear ratio to select size:

Drive	Motor	Approximate Ratios*											
		3	4	5	7	10	15	20	25	35	50	70	100
EB-202	MG-205	002 0031 MT10	002 0041 MT10	002 0051 MT10	002 0077 MT10	002 0105 MT10	002 0155 MT10	002 0210 MT10	002 0250 MT10	002 0350 MT10	002 0500 MT10	002 0700 MT10	003 1080 MT10
EB-202	MG-208	002 0031 MT10	002 0041 MT10	002 0051 MT10	002 0077 MT10	002 0105 MT10	002 0155 MT10	002 0210 MT10	002 0250 MT10	002 0350 MT10	002 0500 MT10	002 0700 MT10	003 1080 MT10
EB-202	NT-207	002 0031 MT10	002 0041 MT10	002 0051 MT10	002 0077 MT10	002 0105 MT10	002 0155 MT10	002 0210 MT10	002 0250 MT10	002 0350 MT10	002 0500 MT10	002 0700 MT10	003 1080 MT10
EB-202	NT-212	002 0031 MT10	002 0041 MT10	002 0051 MT10	002 0077 MT10	002 0105 MT10	002 0155 MT10	002 0210 MT10	002 0250 MT10	002 0350 MT10	002 0500 MT10	002 0700 MT10	003 1080 MT10
EB-203	MG-205	002 0031 MT10	002 0041 MT10	002 0051 MT10	002 0077 MT10	002 0105 MT10	002 0155 MT10	002 0210 MT10	002 0250 MT10	002 0350 MT10	002 0500 MT10	002 0700 MT10	003 1080 MT10
EB-203	MG-208	002 0031 MT10	002 0041 MT10	002 0051 MT10	002 0077 MT10	002 0105 MT10	002 0155 MT10	002 0210 MT10	002 0250 MT10	002 0350 MT10	002 0500 MT10	002 0700 MT10	003 1080 MT10
EB-203	MG-316	002 0031 MT10	002 0041 MT10	002 0051 MT10	002 0077 MT10	002 0105 MT10	002 0155 MT10	002 0210 MT10	002 0250 MT10	002 0350 MT10	002 0500 MT10	002 0700 MT10	003 1080 MT10
EB-203	NT-207												
EB-203	NT-212	002 0031 MT10	002 0041 MT10	002 0051 MT10	002 0077 MT10	002 0105 MT10	002 0155 MT10	002 0210 MT10	002 0250 MT10	002 0350 MT10	002 0500 MT10	002 0700 MT10	003 1080 MT10
EN-204	MG-205	002 0031 MT10	002 0041 MT10	002 0051 MT10	002 0077 MT10	002 0105 MT10	002 0155 MT10	002 0210 MT10	002 0250 MT10	002 0350 MT10	002 0500 MT10	002 0700 MT10	003 1080 MT10
EN-204	MG-208	002 0031 MT10	002 0041 MT10	002 0051 MT10	002 0077 MT10	002 0105 MT10	002 0155 MT10	002 0210 MT10	002 0250 MT10	002 0350 MT10	002 0500 MT10	002 0700 MT10	003 1080 MT10
EN-204	MG-316	002 0031 MT10	002 0041 MT10	002 0051 MT10	002 0077 MT10	002 0105 MT10	002 0155 MT10	002 0210 MT10	002 0250 MT10	002 0350 MT10	002 0500 MT10	002 0700 MT10	003 1080 MT10
EN-204	NT-207	002 0031 MT10	002 0041 MT10	002 0051 MT10	002 0077 MT10	002 0105 MT10	002 0155 MT10	002 0210 MT10	002 0250 MT10	002 0350 MT10	002 0500 MT10	002 0700 MT10	003 1080 MT10
EN-204	NT-212	002 0031 MT10	002 0041 MT10	002 0051 MT10	002 0077 MT10	002 0105 MT10	002 0155 MT10	002 0210 MT10	002 0250 MT10	002 0350 MT10	002 0500 MT10	002 0700 MT10	003 1080 MT10
EN-208	MG-316	002 0031 MT10	002 0041 MT10	002 0051 MT10	002 0077 MT10	002 0105 MT10	002 0155 MT10	002 0210 MT10	002 0250 MT10	002 0350 MT10	002 0500 MT10	002 0700 MT10	003 1080 MT10
EN-208	MG-455	002 0031 MT20	002 0041 MT20	002 0050 MT20	002 0078 MT20	002 0105 MT20	002 0155 MT20	002 0210 MT20	002 0250 MT20	002 0350 MT20	002 0500 MT20	002 0700 MT20	003 1080 MT20
EN-214	MG-4120	002 0031 MT20	002 0042 MT20	002 0050 MT20	002 0078 MT20	002 0105 MT20	002 0155 MT20	002 0210 MT20	002 0250 MT20	002 0350 MT20	002 0500 MT20	002 0700 MT20	003 1080 MT20
EN-214	MG-455	002 0031 MT20	002 0041 MT20	002 0050 MT20	002 0078 MT20	002 0105 MT20	002 0155 MT20	002 0210 MT20	002 0250 MT20	002 0350 MT20	002 0500 MT20	002 0700 MT20	003 1080 MT20
EN-214	MG-490	002 0031 MT20	002 0042 MT20	002 0050 MT20	002 0078 MT20	002 0105 MT20	002 0155 MT20	002 0210 MT20	002 0250 MT20	002 0350 MT20	002 0500 MT20	002 0700 MT20	003 1080 MT20
MD-240	MH-8250	202 0031 MT30	202 0042 MT30	202 0050 MT30	202 0078 MT30	202 0105 MT30	202 0155 MT30	202 0210 MT30	202 0250 MT30	202 0350 MT30	202 0500 MT30	202 0700 MT30	203 1080 MT30
MD-404	MH-316	002 0031 MT10	002 0041 MT10	002 0051 MT10	002 0077 MT10	002 0105 MT10	002 0155 MT10	002 0210 MT10	002 0250 MT10	002 0350 MT10	002 0500 MT10	002 0700 MT10	003 1080 MT10
MD-404	MH-340	002 0031 MT10	002 0041 MT10	002 0051 MT10	002 0077 MT10	002 0105 MT10	002 0155 MT10	002 0210 MT10	002 0250 MT10	002 0350 MT10	002 0500 MT10	002 0700 MT10	003 1080 MT10
MD-404	MH-455	002 0031 MT10	002 0041 MT10	002 0051 MT10	002 0077 MT10	002 0105 MT10	002 0155 MT10	002 0210 MT10	002 0250 MT10	002 0350 MT10	002 0500 MT10	002 0700 MT10	003 1080 MT10
MD-407	MH-455	002 0031 MT10	002 0041 MT10	002 0051 MT10	002 0077 MT10	002 0105 MT10	002 0155 MT10	002 0210 MT10	002 0250 MT10	002 0350 MT10	002 0500 MT10	002 0700 MT10	003 1080 MT10
MD-407	NT-320	002 0031 MT10	002 0041 MT10	002 0051 MT10	002 0077 MT10	002 0105 MT10	002 0155 MT10	002 0210 MT10	002 0250 MT10	002 0350 MT10	002 0500 MT10	002 0700 MT10	003 1080 MT10
MD-407	NT-330	002 0031 MT10	002 0041 MT10	002 0051 MT10	002 0077 MT10	002 0105 MT10	002 0155 MT10	002 0210 MT10	002 0250 MT10	002 0350 MT10	002 0500 MT10	002 0700 MT10	003 1080 MT10
MD-410	MH-455	002 0031 MT10	002 0041 MT10	002 0051 MT10	002 0077 MT10	002 0105 MT10	002 0155 MT10	002 0210 MT10	002 0250 MT10	002 0350 MT10	002 0500 MT10	002 0700 MT10	003 1080 MT10
MD-410	MH-490	002 0031 MT10	002 0041 MT10	002 0051 MT10	002 0077 MT10	002 0105 MT10	002 0155 MT10	002 0210 MT10	002 0250 MT10	002 0350 MT10	002 0500 MT10	002 0700 MT10	003 1080 MT10
MD-410	MH-6120	002 0031 MT10	002 0041 MT10	002 0051 MT10	002 0077 MT10	002 0105 MT10	002 0155 MT10	002 0210 MT10	002 0250 MT10	002 0350 MT10	002 0500 MT10	002 0700 MT10	003 1080 MT10
MD-410	NT-345	002 0031 MT10	002 0041 MT10	002 0051 MT10	002 0077 MT10	002 0105 MT10	002 0155 MT10	002 0210 MT10	002 0250 MT10	002 0350 MT10	002 0500 MT10	002 0700 MT10	003 1080 MT10
MD-410	NT-355	002 0031 MT10	002 0041 MT10	002 0051 MT10	002 0077 MT10	002 0105 MT10	002 0155 MT10	002 0210 MT10	002 0250 MT10	002 0350 MT10	002 0500 MT10	002 0700 MT10	003 1080 MT10
MD-420	MH-200												
MD-420	MH-6300	102 0031 MT30	102 0042 MT30	102 0050 MT30	102 0078 MT30	102 0105 MT30	102 0155 MT30	102 0210 MT30	102 0250 MT30	102 0350 MT30	102 0500 MT30	102 0700 MT30	103 1010 MT30
MD-434	MH-8500	202 0031 MT30	202 0042 MT30	202 0050 MT30	202 0078 MT30	202 0105 MT30	202 0155 MT30	202 0210 MT30	202 0250 MT30	202 0350 MT30	202 0500 MT30	202 0700 MT30	203 1010 MT30
MD-434	MH-8750	402 0031 MT40	402 0039 MT40	402 0053 MT40	402 0067 MT40	402 0105 MT40	402 0140 MT40	402 0210 MT40	402 0250 MT40	402 0350 MT40	402 0500 MT40	402 0700 MT40	403 0900 MT40
SP1401	75UMB300CACAA	002 0031 MT10	002 0041 MT10	002 0051 MT10	002 0077 MT10	002 0105 MT10	002 0155 MT10	002 0210 MT10	002 0250 MT10	002 0350 MT10	002 0500 MT10	002 0700 MT10	003 1080 MT10
SP1402	75UMB300CACAA	002 0031 MT10	002 0041 MT10	002 0051 MT10	002 0077 MT10	002 0105 MT10	002 0155 MT10	002 0210 MT10	002 0250 MT10	002 0350 MT10	002 0500 MT10	002 0700 MT10	003 1080 MT10
SP1402	95UMB300CACAA	002 0031 MT10	002 0041 MT10	002 0051 MT10	002 0077 MT10	002 0105 MT10	002 0155 MT10	002 0210 MT10	002 0250 MT10	002 0350 MT10	002 0500 MT10	002 0700 MT10	003 1080 MT10
SP1403	95UMB300CACAA	002 0031 MT10	002 0041 MT10	002 0051 MT10	002 0077 MT10	002 0105 MT10	002 0155 MT10	002 0210 MT10	002 0250 MT10	002 0350 MT10	002 0500 MT10	002 0700 MT10	003 1080 MT10
SP1404	95UMB300CACAA	002 0031 MT10	002 0041 MT10	002 0051 MT10	002 0077 MT10	002 0105 MT10	002 0155 MT10	002 0210 MT10	002 0250 MT10	002 0350 MT10	002 0500 MT10	002 0700 MT10	003 1080 MT10
SP1404	115UMB300CACAA	002 0031 MT10	002 0041 MT10	002 0051 MT10	002 0077 MT10	002 0105 MT10	002 0155 MT10	002 0210 MT10	002 0250 MT10	002 0350 MT10	002 0500 MT10	002 0700 MT10	003 1080 MT10
SP1405	142UMB300CACAA	002 0031 MT20	002 0041 MT20	002 0050 MT20	002 0078 MT20	002 0105 MT20	002 0155 MT20	002 0210 MT20	002 0250 MT20	002 0350 MT20	002 0500 MT20	002 0700 MT20	003 1080 MT20
SP2401	115UMD300CACAA	002 0031 MT20	002 0041 MT20	002 0050 MT20	002 0078 MT20	002 0105 MT20	002 0155 MT20	002 0210 MT20	002 0250 MT20	002 0350 MT20	002 0500 MT20	002 0700 MT20	003 1080 MT20
SP2402	142UMD300CACAA	002 0031 MT20	002 0042 MT20	002 0050 MT20	002 0078 MT20	002 0105 MT20	002 0155 MT20	002 0210 MT20	002 0250 MT20	002 0350 MT20	002 0500 MT20	002 0700 MT20	003 1080 MT20
SP2402	190UMA300CACAA	102 0031 MT30	102 0042 MT30	102 0050 MT30	102 0078 MT30	102 0105 MT30	102 0155 MT30	102 0210 MT30	102 0250 MT30	102 0350 MT30	102 0500 MT30	102 0700 MT30	103 1010 MT30
SP2403	190UMA300CACAA	102 0031 MT30	102 0042 MT30	102 0050 MT30	102 0078 MT30	102 0105 MT30	102 0155 MT30	102 0210 MT30	102 0250 MT30	102 0350 MT30	102 0500 MT30	102 0700 MT30	103 1010 MT30
SP3401	190UMB300CACAA	202 0031 MT30	202 0042 MT30	202 0050 MT30									